

PROJEKT:	3. REIHEROBERGHEIMSE AM GLOBERGERWESERSTR.
BAUGRUND:	ALDO HEUSS - HOF - PUSHPUNKT BAUTRÄGER GmbH LIEBENAUENFELD 2 1372 SIBIRALEN 2
ZUSCHAUER:	SCHNITTE A. B. 8' HAUSTYP ⑧
LIEFERANT:	REIHEROBERGHEIMSE K. LUDWIG
ENTWURFER:	ELM
GEPRÜFT:	10/01
BAUHER:	AL
BAUZEIT:	10.01.78
ANMERKUNGEN:	

The floor plan illustrates two symmetrical residential units, Typ B and Typ A, separated by a central corridor. Each unit consists of an Abstellraum (storage room), a Flur (corridor), and a Zimmer (room). The plan includes detailed dimensions for room areas and overall unit widths. The central corridor is highlighted in yellow. The plan is oriented with a north arrow pointing towards the top right.

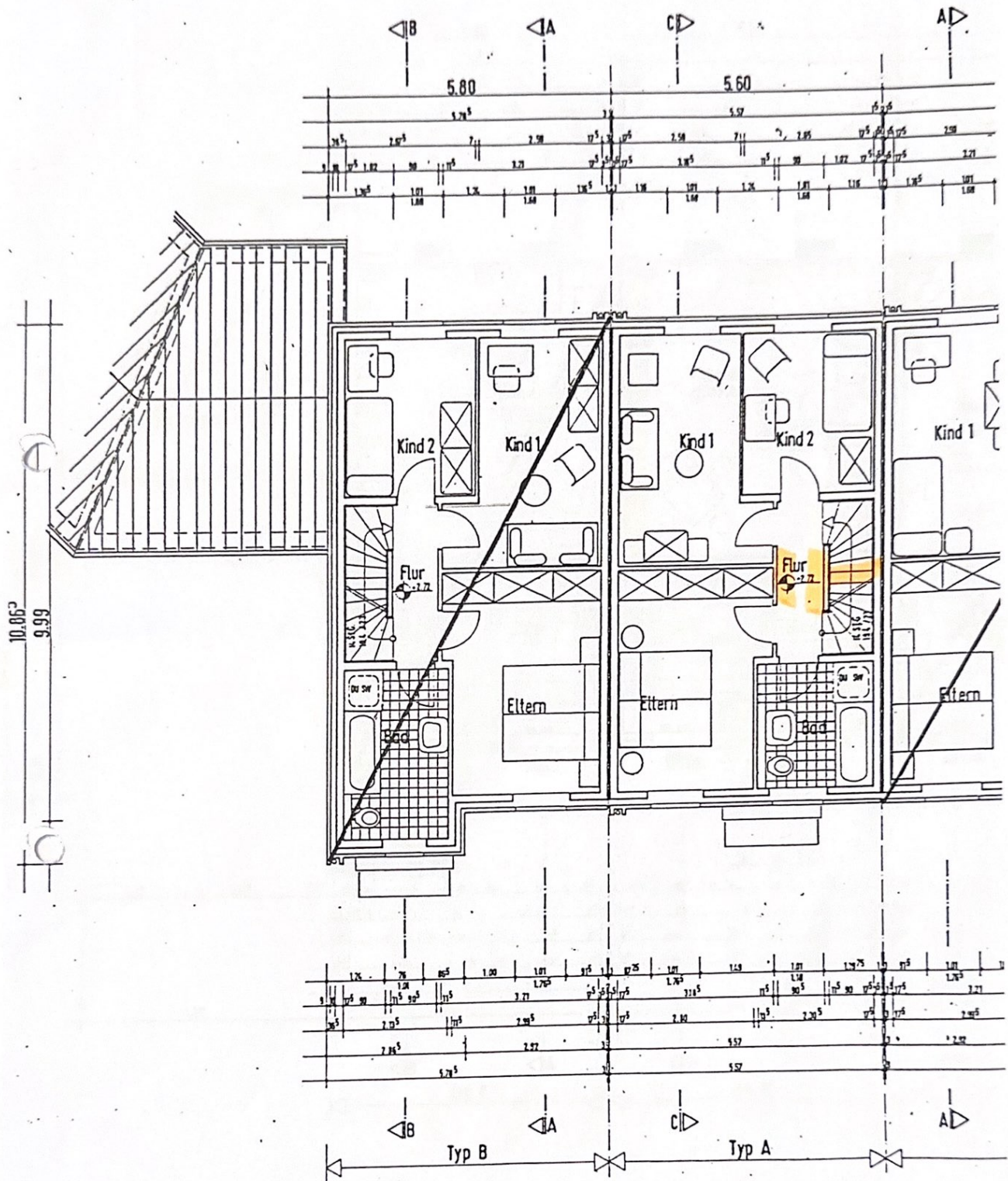
Dimensions and Room Layout:

- Overall Unit Widths:** 5.80 (Typ B) and 5.60 (Typ A).
- Room Dimensions (Approximate):**
 - Abstellraum: 3.21 x 1.71
 - Flur: 1.52 x 1.71
 - Zimmer: 3.21 x 1.71
- Central Corridor:** 1.52 x 1.71

HAUS (π)

H

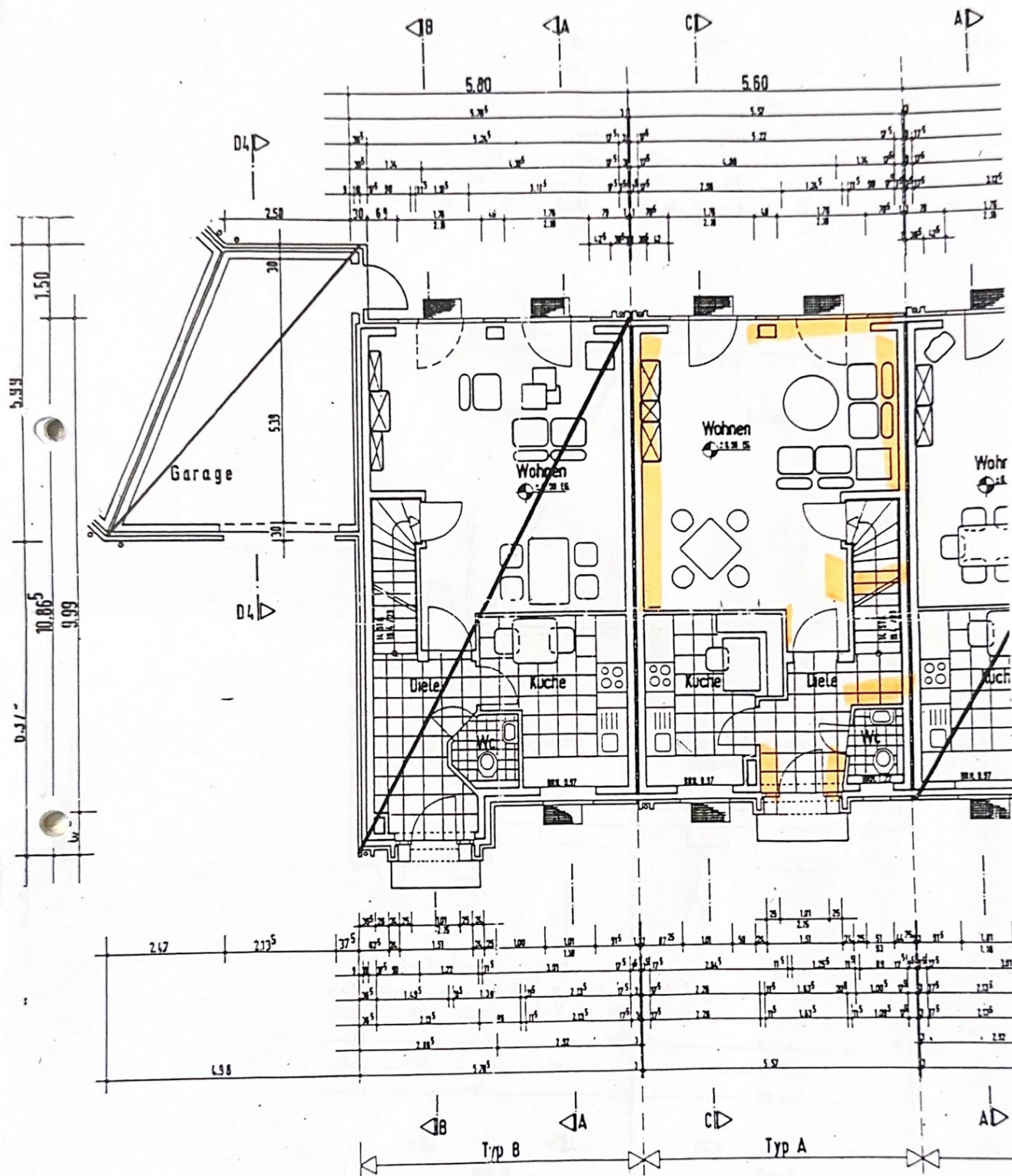
1. Obergeschoss



HAUS 12

HAUS 11

Erdgeschoss

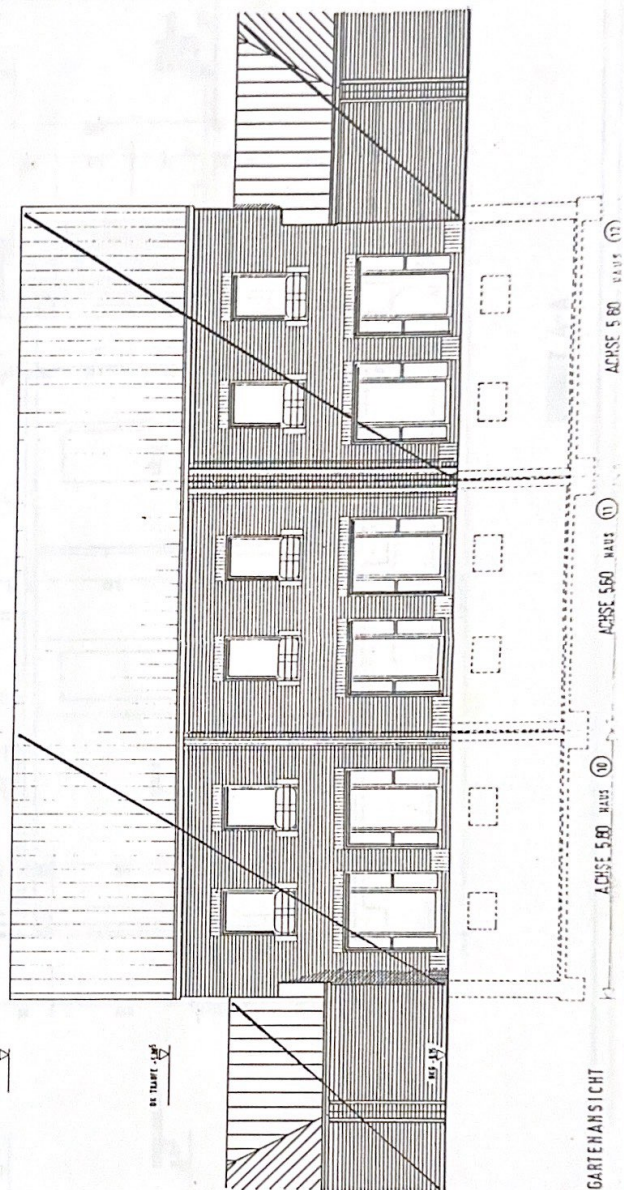
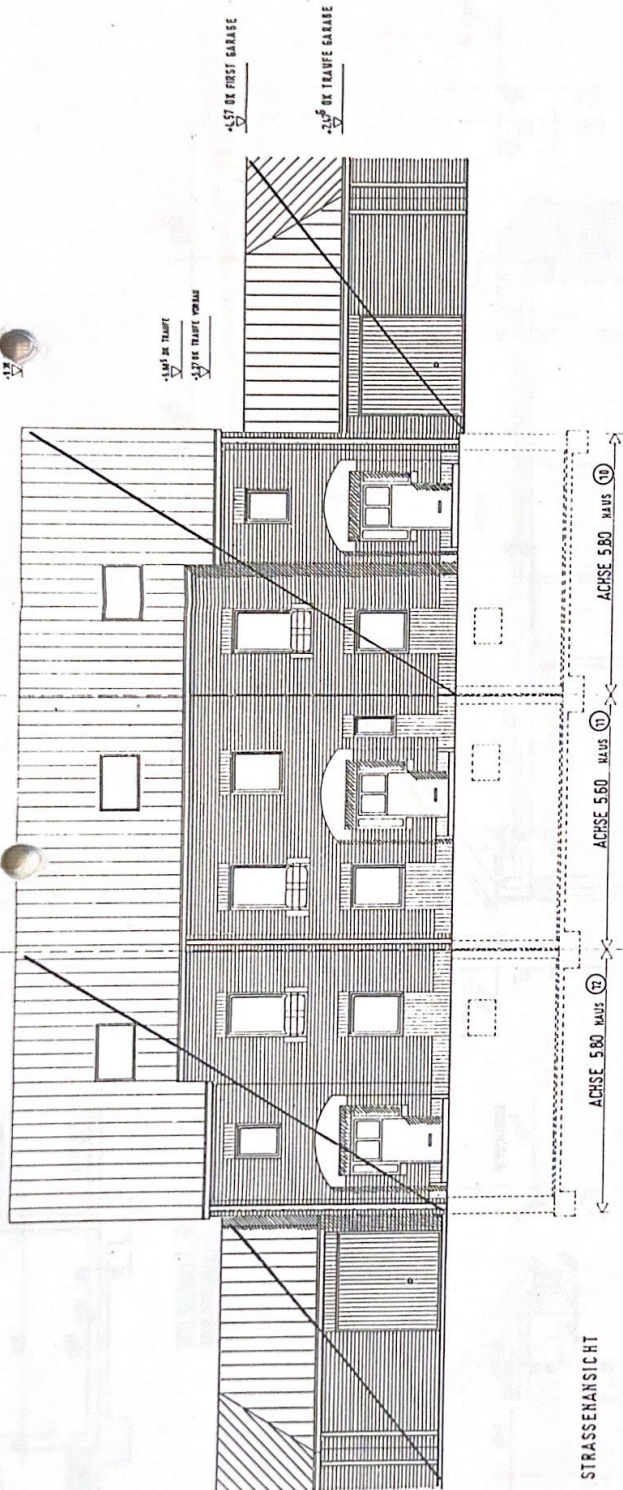


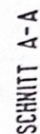
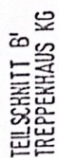
HAUS ⑫

HAUS ⑪

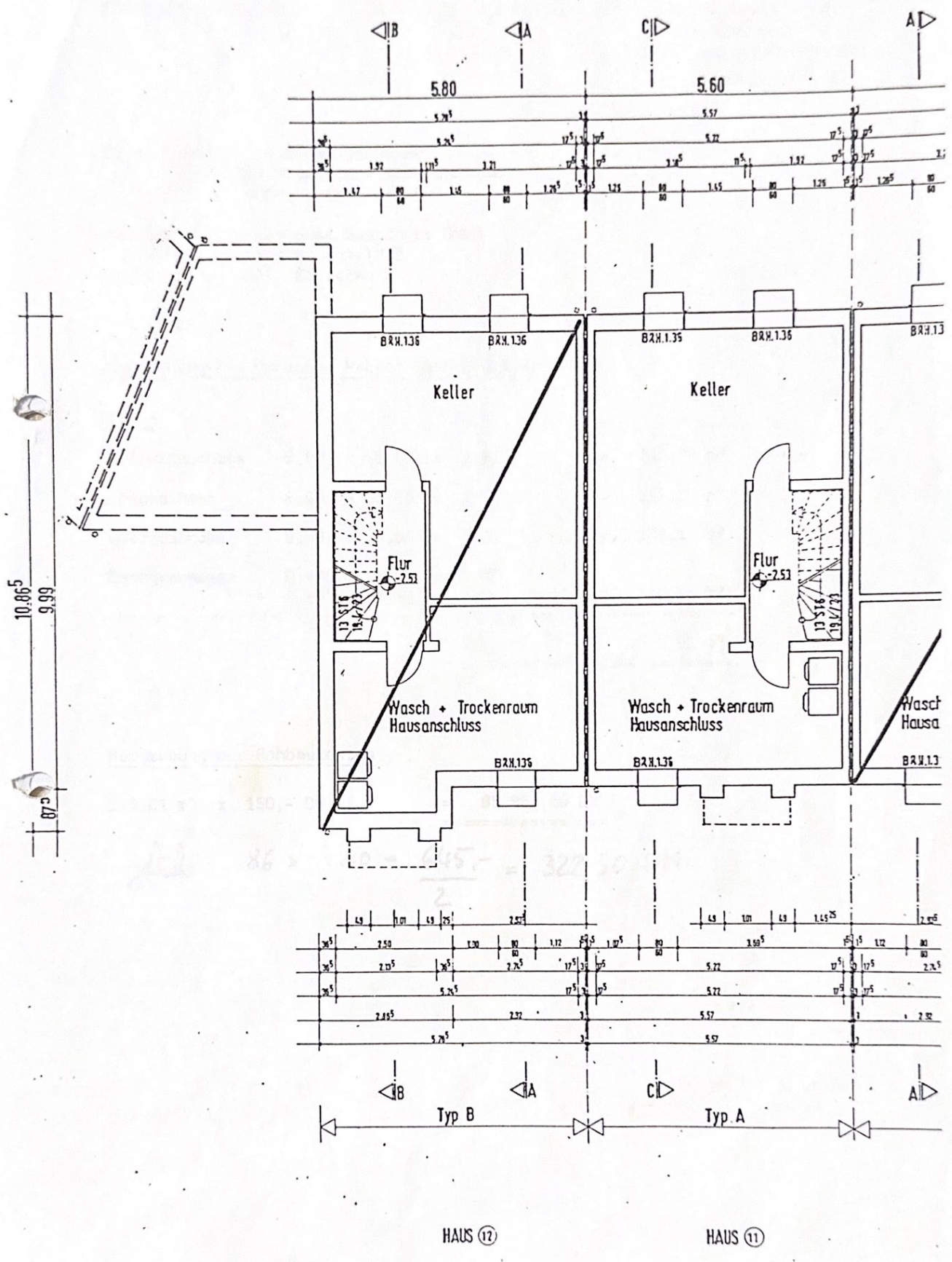
HAUS ⑪



[illegible]



architekturbüro
dipl.-Ing. h. hanrath



HAUS 12

HAUS 11