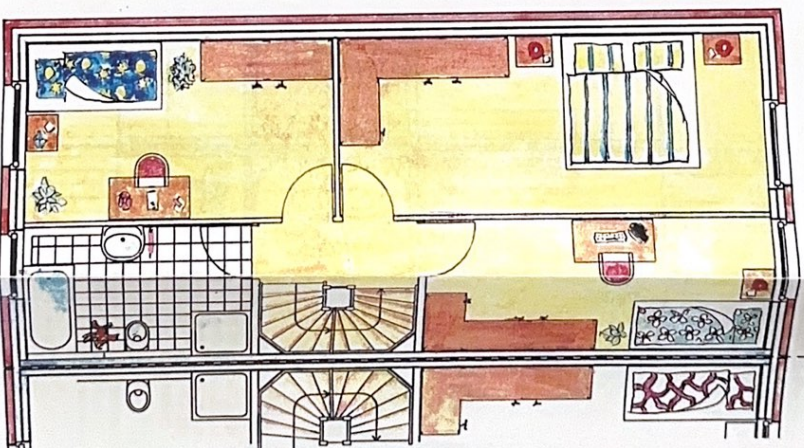


# ERDGESCHOSS " HAUS GILDE 2000 "

Wohnen/Essen	34.23 m <sup>2</sup>
Küche	8.71 m <sup>2</sup>
Diele	6.04 m <sup>2</sup>
WC	1.79 m <sup>2</sup>
Terrasse	8.10 m <sup>2</sup>
	<u>58.87 m<sup>2</sup></u>

- 48 -



# OBERGESCHOSS " HAUS GILDE 2000 "

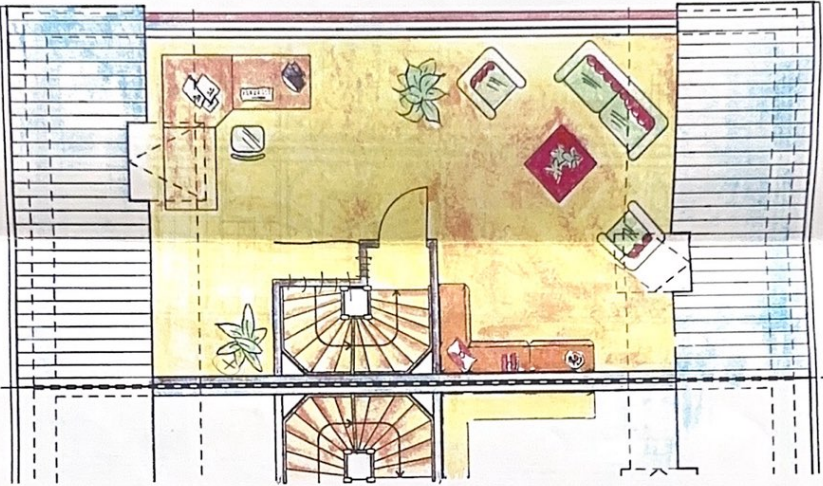
Eltern	16.69 m <sup>2</sup>
Kind 1	12.03 m <sup>2</sup>
Kind 2	11.90 m <sup>2</sup>
Bad	7.76 m <sup>2</sup>
Flur	2.09 m <sup>2</sup>
	<u>50.47 m<sup>2</sup></u>



Versorgungseinheit 500 DM

# DACHGESCHOSS

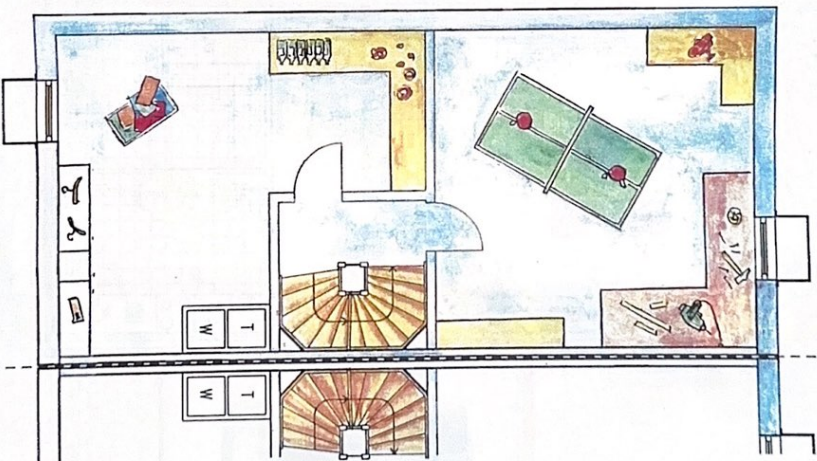
"HAUS GILDE 2000"



Studio : 28.73 m<sup>2</sup>  
Flur : 0.54 m<sup>2</sup>  
Flur : 29.27 m<sup>2</sup>

# KELLERGESCHOSS

"HAUS GILDE 2000"



Keller 1 : 26.21 m<sup>2</sup>  
Keller 2 : 23.62 m<sup>2</sup>  
Flur : 2.24 m<sup>2</sup>  
Flur : 52.07 m<sup>2</sup>